

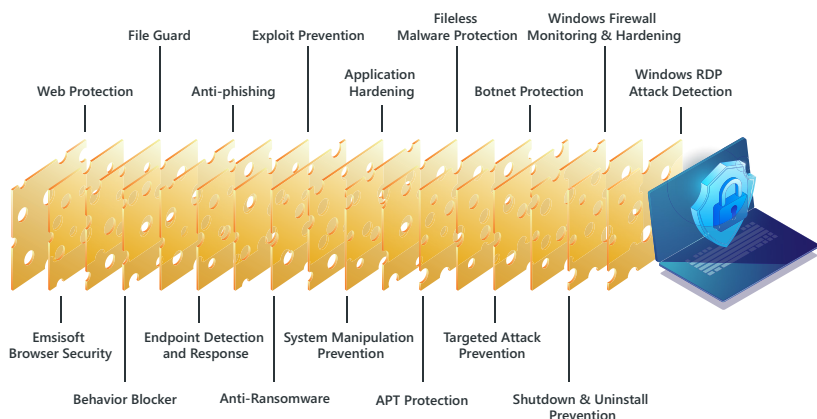
# EMSI

## Emsisoft Enterprise Security

Emsisoft Enterprise Security is an enterprise-grade cybersecurity solution that's easy to deploy and manage, offering advanced protection without overwhelming complexity. Tailored for organizations of all sizes, it ensures robust, streamlined defense against the evolving landscape of cyber threats.

### Multi-Layered Protection

In today's threat landscape, where new vulnerabilities and attack vectors are discovered all the time, a multi-layered defensive strategy is no longer a luxury, it's a necessity. Our solution employs a multi-layered strategy to defend against a wide spectrum of cyber threats. This approach incorporates advanced AI and machine learning, adapting to and countering both known and emerging risks.



#### Web Protection & Browser Security

Block malicious website connections instantly, safeguarding against credential phishing and malware threats with our web protection and browser security.



#### Real-time File Guard

Experience the award-winning Emsisoft dual-engine scanner in action, checking all downloaded and modified files in real-time, including AI-supported malware detection for unparalleled protection.



#### Behavior Blocker

With our Behavior Blocker, stay ahead of new and unknown threats through continuous monitoring of active processes, alerting you at the first sign of suspicious activity.



#### Anti-Ransomware

Our custom-built behavioral monitoring effectively prevents ransomware from encrypting your files, ensuring your data's security against cyber extortion.

//

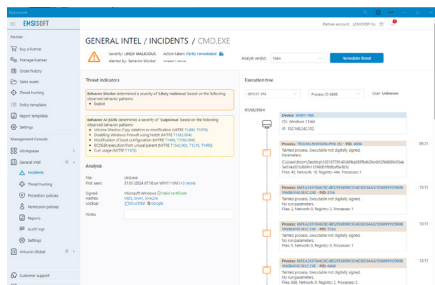
We love the fact that Emsisoft provides a high level of granularity while still being easy to implement. Additionally, we've found their support team to be outstanding. Their responsiveness and expertise have been invaluable to our company

//

Sheldon L., Emsisoft customer

# Award-Winning Management Console

Manage and monitor local device protection effortlessly with our intuitive, cloud-based Management Console, accessible via web and mobile app. This centralized console allows you to adjust settings, analyze security reports, and receive real-time alerts. The Management Console comes with an Application Inventory feature, which enables administrators to quickly and easily see a list of installed applications on users' machines and, optionally, to uninstall any of those applications.



“  
This is a game changer  
”

McFarland IT Solutions.

# Endpoint Detection and Response

Enhance your cybersecurity with our comprehensive EDR provided at no additional cost. Emsisoft EDR provides deep threat intelligence and cloud-based behavioral analysis of malware with only a few clicks, enabling rapid response.



“  
During our extensive testing of EDR solutions, we evaluated various products and concluded that Emsisoft could be an excellent choice. Its ease of installation and use exceeded our expectations. Its protective capabilities in response to offensive security testing were confirmed in the results.  
”

Adrian Scibor, Founder of AVLab Cybersecurity Foundation

# Threat Hunting

All the information you need, all in one place. Whether security analysts are searching for evidence of emerging threats or carrying out a routine check to identify which systems contain vulnerable applications or drivers, Emsisoft Threat Hunting provides real-time visibility across all Emsisoft-protected devices.

# Ransomware Rollback

Ransomware Rollback offers a powerful countermeasure against ransomware. It ensures that even when primary defenses are breached, recovery remains within reach. Rollback, a component of our EDR, identifies potential incidents and creates backups of altered files, storing them in a secure vault for easy restoration.

# More Enterprise-Specific Features

- **Seamless Integration with SIEM**  
Efficiently integrate with SIEM systems for centralized monitoring and improved threat detection.
- **Active Directory Integration**  
Effortlessly synchronize your Active Directory users and devices with our management console.
- **Granular User Permissions**  
Fine-tune your security with customizable permission policies.
- **Unlimited Policies and Admins**  
Create and manage protection and permission policies with no limitations.
- **Priority Support and Call-Back Service**  
Benefit from our priority support and call-back service for rapid assistance.

# Why Choose Emsisoft Enterprise Security?

- **User-Friendly Next-Gen Technology**  
Our solution balances cutting-edge cybersecurity technology with an intuitive interface, ideal for all organization sizes.
- **Exceptional Performance and Value**  
We provide high-end security solutions at outstanding value, ensuring comprehensive protection that aligns with your budget.
- **Unrival Customer Support**  
Our commitment to high-quality customer support means expert assistance is always available.

# Step into the Future of Enterprise Cybersecurity

Embrace advanced digital protection with Emsisoft Enterprise Security. Explore our solution designed to empower your enterprise against the ever-evolving threat landscape. Visit our website for more information and begin your journey with a free trial, experiencing the Emsisoft difference.

Get started today with a free 30-day trial!

**Free Trial**

Visit our website to learn more

**emsisoft.com**

